

DOMINICAN REPUBLIC

Visitor Arrival Summary

Tourist Arrivals to the Dominican Republic grew moderately in 2010 by 3.3 percent to end with a total of 4,124.5 thousand. Of this total, 85.4 percent were Non-National arrivals. The Winter season arrivals increased by 2.3 percent, while the Summer season saw 3.9 percent more tourists visiting the destination. The only decline all year came in April which yielded 3.2 percent fewer Stay-overs.

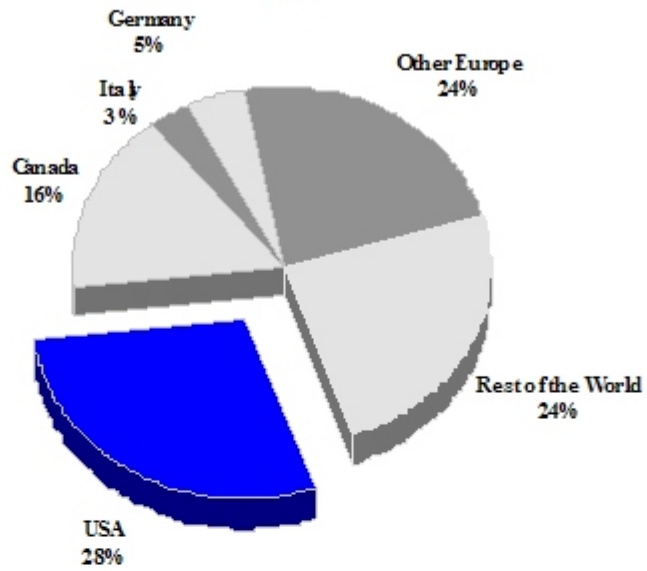
- ◆ The United States continued to be the most important source market for the Dominican Republic, with a near 30.0 percent share, and providing some 1,226.4 thousand arrivals. This total was an increase of 6.8 percent over the previous year or 77.8 thousand tourists. Arrivals from Canada increased slightly by 2.0 percent to end at just over 659.0 thousand. Europe, as a whole, provided 4.9 percent fewer tourists in 2010 (1,184.3 thousand) but the performances of the individual markets were mixed. Germany showed growth by a mere 1.4 percent while Italy suffered the biggest decline of 17.5 percent, lower levels of arrivals were also recorded from the United Kingdom (-7.2 percent) and Other Continental Europe (-3.9 percent). Stay-over arrivals coming from other parts of the world were up by approximately 11.0 percent.
- ◆ Cruise Passenger Arrival numbers slumped back to near the pre-2008 levels, being down by a significant 29.0 percent. Practically all months, with the exception of August, suffered declines in 2010 with nine months having doubled-digit drops. These contractions ranged from -18.9 percent to as much as -99.7 percent.

TOURISM HIGHLIGHTS FOR 2010

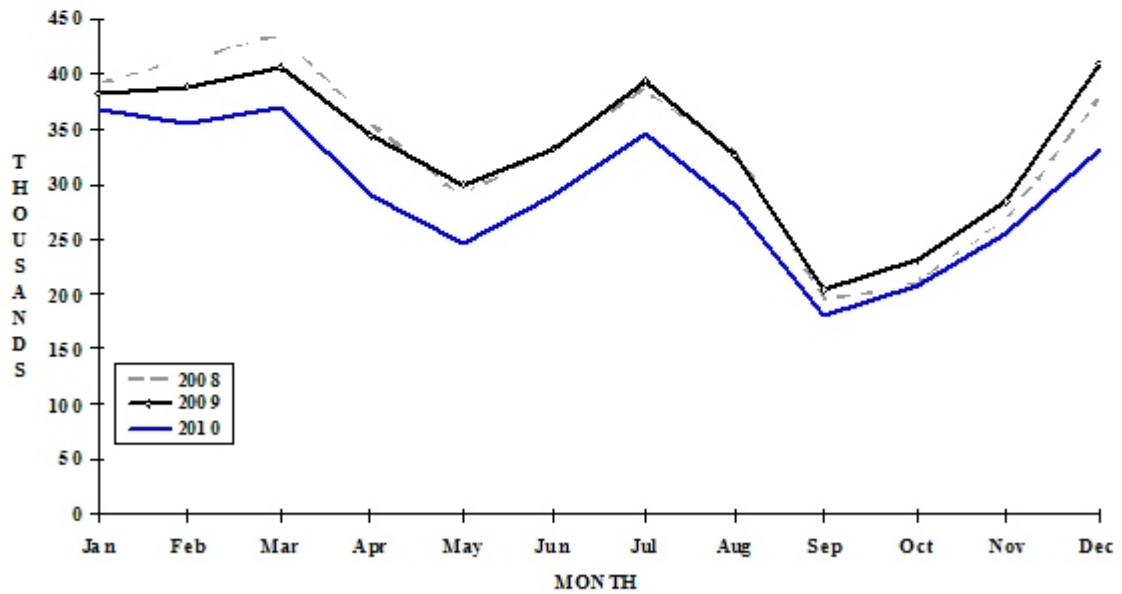
VISITOR ARRIVALS			
Tourist Air Arrivals ✈	4,124,543	Cruise Passengers	352,539
➔ Summer	62.3%	➔ Summer	36.9%
➔ Winter	37.7%	➔ Winter	63.1%
		Cruise ship calls	264
VISITOR PROFILE			
Average Length of Stay (nights)	9.2	Tourist Arrivals by Purpose of Visit ^{II}	
Tourist Arrivals by Place of Stay ^{II}		➔ Holiday	95.1%
➔ Hotels	77.7%	➔ Business	3.4%
➔ Other	22.3%	➔ Other	1.5%
TOURISM AND OTHER RELATED ECONOMIC STATISTICS			
Visitor Expenditure (US\$ millions)	\$4,209.1	GDP at Factor Cost (US\$ millions)	\$51,657.6
Consumer Price Index (% ch. 2010/'09)	5.9%	Hotel & Restaurant contribution to GDP ^{VII}	8.0%
ACCOMMODATION STATISTICS		SOCIO-ECONOMIC STATISTICS	
Rooms	66,968	Land Area (square Kilometres)	48,442
Room Occupancy Rates	66.6%	Population (thousand mid year 2010)	9,974.0

DOMINICAN REPUBLIC

TOURIST ARRIVALS BY MAIN MARKETS
2010



MONTHLY TOURIST ARRIVALS



DOMINICAN REPUBLIC

TOURIST AIR ARRIVALS BY NATIONALITY

Nationality	2006	2007	2008	2009	2010
Non-Nationals	3342106	3398374	3447730	3415616	3521110
Dominicans*	622949	581208	531942	576687	603433
TOTAL	3965055	3979582	3979672	3992303	4124543

*Dominican nationals resident overseas.

VISITOR ARRIVALS* BY MODE OF ARRIVAL

Mode of Arrival	2006	2007	2008	2009	2010
Air	3965055	3979582	3979672	3992303	4124543
Sea*	303489	384878	475206	496728	352539
TOTAL	4268544	4364460	4454878	4489031	4477082

*Includes Cruise passenger arrivals

FOREIGN VISITOR AIR ARRIVALS BY NATIONALITY

Country of Residence	2006	2007	2008	2009	2010	%Share 2010
U.S.A	1092317	1080066	1091813	1148533	1226367	29.7
Canada	509323	587370	634937	646285	659063	16.0
Italy	144115	146808	133319	121317	100052	2.4
Germany	226737	217279	207893	179180	181682	4.4
United Kingdom	242559	225157	216130	183186	169919	4.1
Other Europe	812511	798232	795888	762242	732616	17.8
Other	937493	924670	899692	951560	1054844	25.6
TOTAL	3965055	3979582	3979672	3992303	4124543	100.0

FOREIGN VISITOR AIR ARRIVALS

Month	2006	2007	2008	2009	2010	% Change
						2010/09
January	356247	375933	391310	382055	404264	5.8
February	367698	372966	413841	387487	395779	2.1
March	393014	412684	435779	406270	421829	3.8
April	371953	348758	353782	342398	331521	-3.2
May	280738	267762	289402	298374	297019	-0.5
June	336738	328028	331871	331373	348375	5.1
July	420265	400960	386690	393452	417699	6.2
August	335081	336304	329636	325863	333110	2.2
September	210695	215913	194248	204522	219292	7.2
October	223449	234704	209616	229388	247254	7.8
November	281308	284969	268469	284824	297036	4.3
December	387869	400601	375028	408297	411365	0.8
TOTAL	3965055	3979582	3979672	3994303	4124543	3.3

* Including Dominican nationals resident overseas,

MONTHLY CRUISE ARRIVALS

Month	2006	2007	2008	2009	2010	% Change
						2010/09
January	47014	50656	82859	102007	66863	-34.5
February	54168	57243	89890	86764	55700	-35.8
March	56989	64072	76975	101552	80135	-21.1
April	29186	42620	47950	53456	19757	-63.0
May	10650	13307	15953	9070	6659	-26.6
June	7183	15715	15660	7210	0	-
July	14961	14377	13145	9815	5174	-47.3
August	8226	8849	6491	4410	5214	18.2
September	3613	4832	2206	3632	11	-99.7
October	4241	10972	5580	19287	15644	-18.9
November	20065	31779	28548	41343	40386	-2.3
December	47193	70456	89949	58183	56996	-2.0
TOTAL	303489	384878	475206	496729	352539	-29.0

TOURIST ACCOMMODATION (Rooms)

Rooms	2004	2005	2006	2007	2008
Hotels	n.a	56555	n.a	n.a	n.a
Apartments	n.a	376	n.a	n.a	n.a
Villas/Cottages	n.a	610	n.a	n.a	n.a
Other	n.a	2329	n.a	n.a	n.a
TOTAL	59082	59870	63206	64898	66166

* Preliminary

**Source: Banco Central de la Republica Dominicana

+

GRENADA

Visitor Arrival Summary

Tourist Arrivals to Grenada totaled 106.2 thousand in 2010, a decrease of 6.4 percent. This negative growth continued the decline which began a year earlier. The continued slide was propagated by the consistent decreases seen in almost every month, with the heaviest losses occurring in April (-23.1 percent), May (-15.6 percent) and June (-12.9 percent).

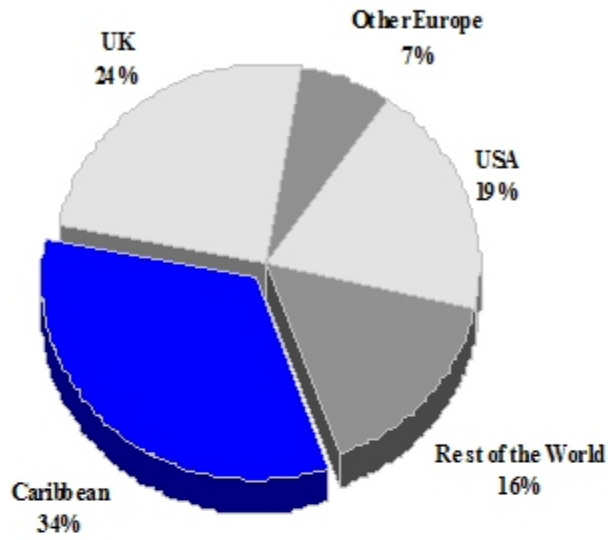
- ◆ All major markets recorded decreased Stay-over numbers in 2010. The United Kingdom continued as the main source market with 25.8 thousand stay-overs or 24.3 percent of all arrivals originating from there. Arrivals from the UK were down by 6.3 percent. Arrivals from the United States contracted similarly by 5.1 percent to end with a total of 20.0 thousand. Arrivals from Caribbean territories were down by 11.8 percent, with Trinidad and Tobago aggregating 11.3 thousand and Other CARICOM 11.2 thousand, both with a 10.6 percent share. Arrivals from all other countries suffered a 3.1 percent reduction.
- ◆ Yet again the count of Grenadians resident abroad diminished, falling by 3.6 percent below the 2009 total.
- ◆ Cruise Passenger arrivals to Grenada moved from 342.9 thousand in 2009 to 333.6 thousand in 2010, a reduction of 2.7 percent. This reduction was associated with 40 fewer calls; 206 ships in 2010 versus 246 in 2009. The majority of passengers, some 59.8 percent or 199.4 thousand arrived in the Winter with the remaining 134.1 thousand or 40.2 percent arriving in the Summer months.

TOURISM HIGHLIGHTS FOR 2010

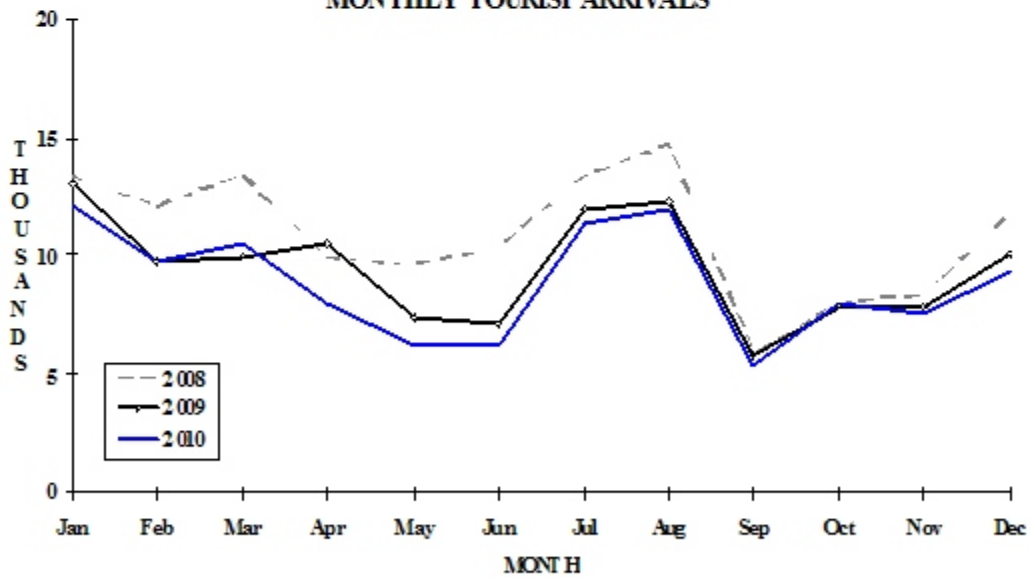
VISITOR ARRIVALS			
Tourist Arrivals ➔ ➔ <i>Summer</i> ➔ <i>Winter</i>	106,156 62.1% 37.9%	Cruise Passengers ➔ <i>Summer</i> ➔ <i>Winter</i> Cruise Ship calls Yachts calls ^{IV}	333,556 40.2% 59.8% 206 3,612
VISITOR PROFILE			
Average Length of Stay (nights) ^{II} Tourist Arrivals by Purpose of Visit ^{II} ➔ Holiday ➔ Business ➔ Other	8.4 79.8% 15.0% 5.2%	Tourist Arrivals by Place of Stay ^{II} ➔ <i>Hotels</i> ➔ <i>Guest Houses/Apartments</i> ➔ <i>Private</i> ➔ <i>Other</i>	35.2% 12.3% 44.5% 8.0%
TOURISM AND OTHER RELATED ECONOMIC STATISTICS			
Total Expenditure (US\$ millions) ^I Tourism Budget (US\$ thousands) ^{Xb}	\$96.2 \$4,179	Hotel and Restaurant contribution to GDP ^{III} GDP at Factor Cost (US\$ millions) ^I Consumer Price Index (% ch. 2010/'09)	8.6% \$529.2 3.4%
ACCOMMODATION STATISTICS		SOCIO-ECONOMIC STATISTICS	
Rooms ^{II} Room Occupancy Rates ^{VIII}	1,880 71.0%	Land Area (square Kilometres) Population (thousand mid year 2009)	344 110.8

GRENADA

**TOURIST ARRIVALS BY MAIN MARKETS
2010**



MONTHLY TOURIST ARRIVALS



GRENADA

TOURIST ARRIVALS BY COUNTRY OF RESIDENCE

Country of Residence	2006	2007	2008	2009	2010	% Share 2010
United States	27332	27219	22011	21111	20038	18.9
Canada	6387	6038	6377	6295	6187	5.8
United Kingdom	25187	33893	35235	27512	25791	24.3
Other Europe	7510	7912	9137	8138	7661	7.2
Trinidad & Tobago	15602	14552	14874	12584	11282	10.6
Other CARICOM	15525	14406	14475	12916	11216	10.6
Grenadians abroad	17775	19165	17104	13876	13377	12.6
Rest of the World	3336	5962	11150	10938	10604	10.0
TOTAL	118654	129147	130363	113370	106156	100.0

MONTHLY TOURIST ARRIVALS

Month	2006	2007	2008	2009	2010	% Change 2010/09
January	11888	12514	13333	12987	12063	-7.1
February	10490	10890	12057	9688	9655	-0.3
March	10903	10027	13357	9949	10484	5.4
April	11013	14386	9859	10451	8035	-23.1
May	7656	9283	9592	7408	6254	-15.6
June	7468	8236	10314	7094	6178	-12.9
July	10868	12351	13294	12025	11429	-5.0
August	14816	15214	14713	12287	12016	-2.2
September	5835	6822	5828	5735	5347	-6.8
October	7415	8304	7994	7894	7947	0.7
November	8154	9442	8320	7795	7503	-3.7
December	12148	11678	11702	10057	9245	-8.1
TOTAL	118654	129147	130363	113370	106156	-6.4

GRENADA

CRUISE PASSENGER ARRIVALS

Month	2006	2007	2008	2009	2010	% Change 2010/09
January	46238	43876	49317	63560	58663	-7.7
February	35342	39679	50713	52949	53183	0.4
March	32911	36024	52269	57150	59032	3.3
April	24764	37413	27977	34720	28538	-17.8
May	849	6060	886	7330	3285	-55.2
June	119	2936	0	2823	680	-75.9
July	64	4352	0	2342	0	-
August	0	3729	0	5131	0	-
September	0	2847	0	3409	3048	-
October	7335	7040	8958	8726	12005	37.6
November	23769	32496	37817	38726	46484	20.0
December	47256	53871	64775	65986	68638	4.0
TOTAL	218647	270323	292712	342852	333556	-2.7

Number of Calls

Cruise Ships	221	259	221	246	206
Yachts	3612	n.a	n.a	n.a	n.a

TOURIST ACCOMMODATION (Rooms)

Type of Accommodation	2004	2005	2006	2007	2008
Hotels	466	878	n.a	n.a	n.a
Guest Houses	172	241	n.a	n.a	n.a
Apartments/Cottages	222	351	n.a	n.a	n.a
TOTAL	860	1470	1595	1627	1880

Source: Grenada Board of Tourism

GUADELOUPE
(including Les Saintes, Desirade, Marie
Galante, St Barthelemy and St Martin)

Visitor Arrival Summary

Data was unavailable for Guadeloupe in 2010. CTO estimated that tourist arrivals totaled 799.4 thousand in 2003, this was some 33 thousand more than the estimated 765.4 thousand of 2002.

TOURISM HIGHLIGHTS FOR 2010

VISITOR ARRIVALS			
*Tourist Arrivals ^x ✈	623,134	Cruise Passengers ^{iv}	195,102
↳ Summer ¹	40.2%	↳ Summer	62.6%
↳ Winter ¹	59.8%	↳ Winter	37.4%
		Cruise calls ^{vii}	284
VISITOR PROFILE			
Average Length of Stay (nights) ⁱⁱ	3.4	Tourist Arrivals by Place of Stay^x	
Tourist Arrivals by Purpose of Visit^x		↳ Hotels	70%
↳ Holiday	88%	↳ Guest House/Apartments	24%
↳ Business	12%	↳ Private	n.a.
↳ Other	n.a.	↳ Other	6%
TOURISM AND OTHER ECONOMIC STATISTICS			
Total Expenditure (US\$ millions) ⁱⁱⁱ	\$344.0	Tourism Budget (US\$ thousands) ^b	\$8,137
		Consumer Price Index (% ch. 2003/'02)	1.6%
ACCOMMODATION STATISTICS		SOCIO-ECONOMIC STATISTICS	
Rooms	4,553	Land Area ** (square Kilometres)	1,373
Room Occupancy Rates ⁱⁱ	55.6%	Population (thousand mid year 2010)	404.4

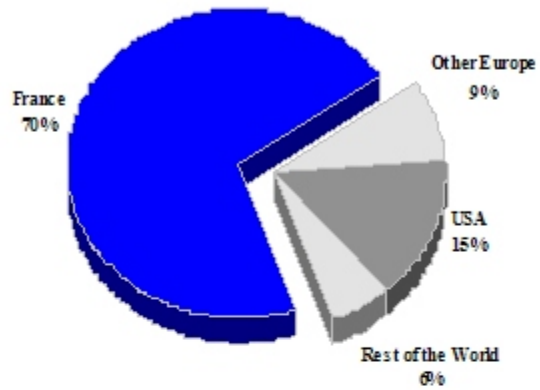
* Estimated by Office Départemental du Tourisme, Guadeloupe

** Including dependencies

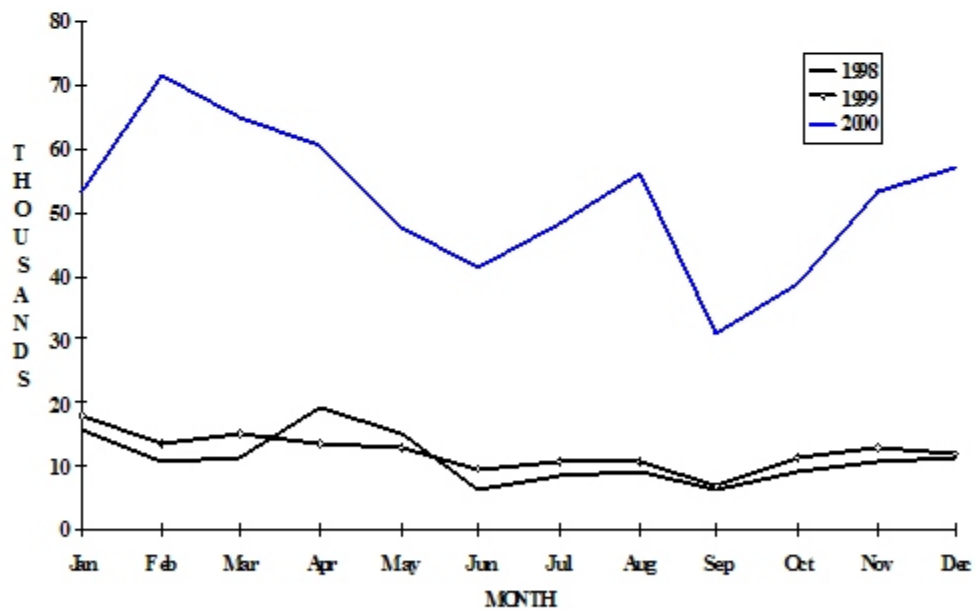
¹ Distribution based on data on hotel registrations

GUADELOUPE

TOURIST ARRIVALS BY MAIN MARKETS 2000



MONTHLY TOURIST ARRIVALS



•The sample in 2000 was different from that of 1999

ESTIMATED TOURIST ARRIVALS

	1999	2000	2001	2002	2003
Guadeloupe	561000	602875	520000	n.a	n.a
Lles Du Nord	n.a	204165	n.a	n.a	n.a
TOTAL	711000	807040	773400	^e765700	^e799400

TOURIST ARRIVALS AT HOTELS *

Country of Residence	1999	2000	2001	2002	% Share	
					2003	2003
United States	5073	92474	n.a	n.a	n.a	n.a
Canada	2254	10431	n.a	n.a	n.a	n.a
France	124330	440779	n.a	n.a	n.a	n.a
Other Europe	12700	54606	n.a	n.a	n.a	n.a
Americas/Caribbean	1108	22966	n.a	n.a	n.a	n.a
Rest of World	736	1878	n.a	n.a	n.a	n.a
TOTAL	146201	623134	n.a	n.a	n.a	n.a

MONTHLY TOURIST ARRIVALS AT HOTELS

Month	1999	*2000	2001	2002	% Change	
					2003	2003/02
January	17885	53164	n.a	n.a	n.a	n.a
February	13655	71475	n.a	n.a	n.a	n.a
March	15011	65153	n.a	n.a	n.a	n.a
April	13342	60494	n.a	n.a	n.a	n.a
May	12727	47545	n.a	n.a	n.a	n.a
June	9853	41595	n.a	n.a	n.a	n.a
July	10554	48006	n.a	n.a	n.a	n.a
August	10554	55913	n.a	n.a	n.a	n.a
September	6593	30654	n.a	n.a	n.a	n.a
October	11092	38848	n.a	n.a	n.a	n.a
November	12994	53082	n.a	n.a	n.a	n.a
December	11941	57205	n.a	n.a	n.a	n.a
TOTAL	146201	623134	n.a	n.a	n.a	n.a

* The reader is cautioned when using the monthly percentage change since the number of reporting hotels may vary from year to year. This is particularly true for 2000, where the sample changed.

CRUISE PASSENGER ARRIVALS

Month	2002	2003	2004	2005	% Change	
					2006	2006/50
January	40053	32643	n.a	17775	14901	-16.2
February	42653	30881	n.a	11714	15137	29.2
March	51507	33812	n.a	13187	18866	43.1
April	25981	24790	n.a	9537	7802	-18.2
May	0	0	n.a	120	679	-
June	0	4255	n.a	0	0	-
July	5394	6164	n.a	0	0	-
August	0	6193	n.a	0	0	-
September	0	4054	n.a	0	0	-
October	0	5305	n.a	0	327	-
November	11137	10414	n.a	3556	2363	-33.5
December	28103	36591	n.a	16830	12795	-24.0
TOTAL	204828	195102	n.a	72719	72870	0.2
Number of Calls	240	284	n.a	n.a	n.a	

TOURIST ACCOMMODATION (Hotel Rooms Only)

Area	1999	2000	2001	2002	2003
Guadeloupe*	4459	4504	n.a	n.a	4159
Les Saintes	80	85	n.a	n.a	83
Saint Barthelemy	571	576	n.a	n.a	567
Saint Martin	2979	2801	n.a	n.a	2623
Marie Galante & Desirade	171	170	n.a	n.a	171
TOTAL	8260	8136	8019	n.a	7603

* Grand Terre and Basse Terre

Source: Office Departemental du Tourisme de la Guadeloupe

GUYANA

Visitor Arrival Summary

Tourist Arrivals to Guyana continued to perform reasonably well with a 7.5 percent increase over the previous year's total. Some 151.9 thousand Stay-overs visited this destination by the end of 2010. Of these, 105.2 thousand (69.2 percent) arrived in the Summer, and 46.8 thousand (30.8 percent) came in the Winter.

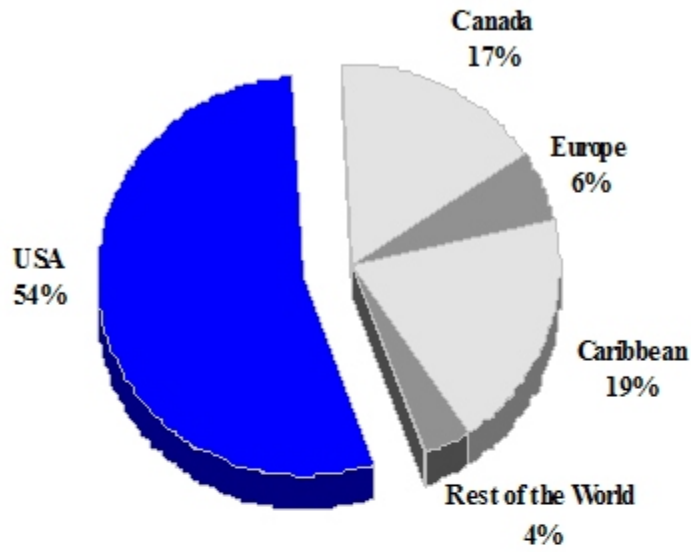
- ◆ All major source markets registered increases, with the South American market growing by a whopping 54.0 percent, even though this market only accounted for a minute 2.2 percent of all arrivals. Arrivals originating in the United States commanded a 54.6 percent share of total tourist arrivals, growing by 7.8 percent to a total of 82.2 thousand. Caribbean countries, the second most important source of tourists to Guyana (19.4 percent of the total) provided 29.5 thousand tourists in the period, increasing by 5.2 percent over the 2009 figure. Tourist arrivals from Canada increased by 6.6 percent while those from Europe grew by 1.0 percent. These two markets recorded 25.4 thousand and 8.4 thousand tourist visits respectively.

TOURISM HIGHLIGHTS FOR 2010

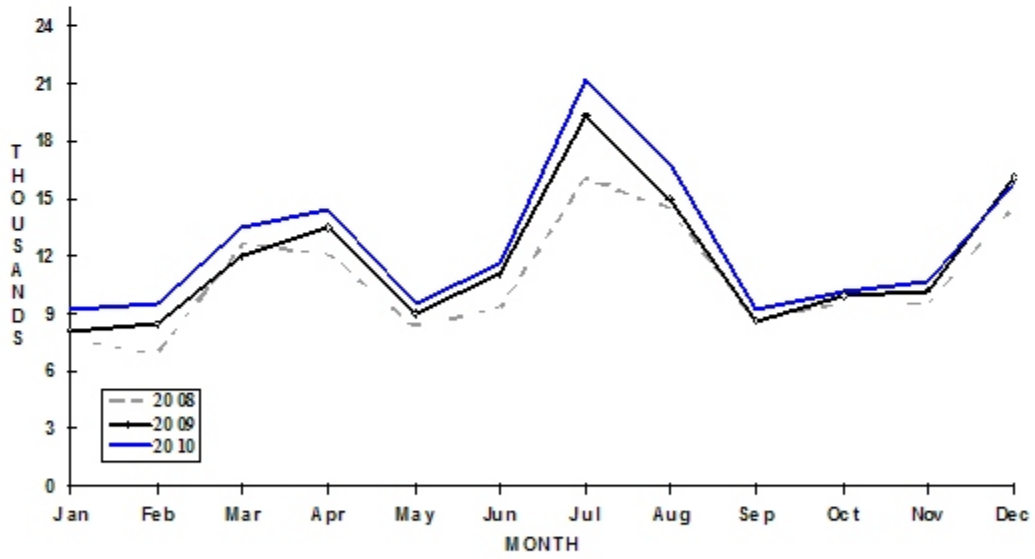
VISITOR ARRIVALS			
Tourist Arrivals ✈	151,926	Arrivals by Sea	<u>NOT</u>
➤ <i>Summer</i>	69.2%		<u>AVAIL</u>
➤ <i>Winter</i>	30.8%		<u>ABLE</u>
VISITOR PROFILE			
Average Length of Stay (<i>nights</i>) ^{IX}	19.2	Tourist Arrivals by Place of Stay ^{VI}	
Tourist Arrivals by Purpose of Visit ^V		➤ <i>Hotels</i>	13.7%
➤ <i>Holiday</i>	64.3%	➤ <i>Guest House/Apartments</i>	0.7%
➤ <i>Business</i>	10.9%	➤ <i>Private</i>	85.2%
➤ <i>Other</i>	24.8%	➤ <i>Other</i>	0.3%
TOURISM AND OTHER RELATED ECONOMIC STATISTICS			
Total Expenditure (<i>US\$ millions</i>) ^{VI e}	\$109.0	GDP at Factor Cost (<i>US\$ millions</i>)	\$1,946.0
Tourism Budget (<i>US\$ thousand</i>) ^X	\$700	Consumer Price Index (<i>% ch. 2010/'09</i>)	4.5%
ACCOMMODATION STATISTICS		SOCIO-ECONOMIC STATISTICS	
Rooms ^X	730	Land Area (<i>square Kilometres</i>)	215,000
		Population (<i>thousand mid year 2010</i>)	778.1

GUYANA

**TOURIST ARRIVALS BY MAIN MARKETS
2010**



MONTHLY TOURIST ARRIVALS



GUYANA

TOURIST ARRIVALS BY COUNTRY OF ORIGIN

Country of Origin	2006	2007	2008	2009	%Share	
					2010	2010
United States	57193	69823	66350	76955	82966	54.6
Canada	14580	19785	21470	23812	25381	16.7
Europe	8390	9978	8937	8277	8357	5.5
Caribbean	28437	28376	27860	28026	29487	19.4
South America	2087	-	2684	2186	3366	2.2
Other	2787	6095*	2294	2025	2369	1.6
TOTAL	113474	134057	129595	141281	151926	100.0

* includes Arrivals from South America

MONTHLY TOURIST ARRIVALS

Month	2006	2007	2008	2009	% Change	
					2010	2010/09
January	8156	8933	7619	8150	9284	13.9
February	7977	8496	6921	8429	9501	12.7
March	9664	13977	12626	11892	13506	13.6
April	13250	13081	12139	13532	14484	7.0
May	8212	10123	8316	8960	9660	7.8
June	8716	12067	9284	11029	11651	5.6
July	11218	17959	16062	19395	21208	9.3
August	8033	13902	14455	15069	16807	11.5
September	6069	8366	8603	8621	9222	7.0
October	8789	9627	9576	9925	10031	1.1
November	8443	8916	9490	10204	10738	5.2
December	14947	8610	14504	16075	15834	-1.5
TOTAL	113474	134057	129595	141281	151926	7.5

VISITOR ARRIVALS BY MODE OF ENTRY AND BY SEX

Mode of Entry	1996	1997	1998	1999	2000
Air	80817	67833	n.a	n.a	n.a
Overland	453	405	n.a	n.a	n.a
Sea	10654	7498	n.a	n.a	n.a
Not Stated	-	1	n.a	n.a	n.a
TOTAL	91924	75737	n.a	n.a	n.a

Sex	1996	1997	1998	1999	2000
Male	52114	42857	n.a	n.a	n.a
Female	39633	32879	n.a	n.a	n.a
Not Stated	177	1	n.a	n.a	n.a

TOURIST ACCOMMODATION* (Rooms)

Area	2002	2003	2004	2005	2006
Georgetown	n.a	n.a	n.a	n.a	n.a
Rest of Country	n.a	n.a	n.a	n.a	n.a
Total	n.a	n.a	n.a	n.a	n.a

TOURIST ACCOMMODATION (Rooms)

Type of Accommodation	2002	2003	2004	2005	2006
Hotel/Guest House	n.a	n.a	n.a	n.a	n.a
Resort Lodge	n.a	n.a	n.a	n.a	n.a
TOTAL	n.a	n.a	n.a	n.a	n.a

*Tourist hotels only

Sources: Guyana Tourism Authority; Statistical Bureau - Guyana

HAITI

Visitor Arrival Summary

Data was unavailable for Haiti in 2010.

For 2007, it was reported that some 386.1 thousand tourists visited Haiti. This figure included for the first time Haitians resident aboard.

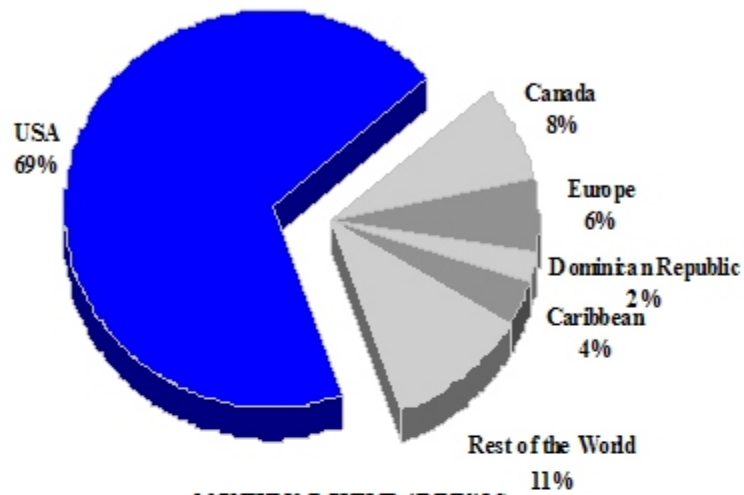
TOURISM HIGHLIGHTS FOR 2010

VISITOR ARRIVALS			
Tourist Arrivals ^{III}	386,060	Cruise Passengers ^{III}	482,077
➔ Summer	75.2%	➔ Summer	63.2%
➔ Winter	24.8%	➔ Winter	36.8%
VISITOR PROFILE			
Tourist Arrivals by Purpose of Visit ^{IX}		Tourist Arrivals by Place of Stay ^X	
➔ Holiday	31.0%	➔ Hotels	37.1%
➔ Business	18.0%	➔ Private/Unregistered	62.9%
➔ Other	51.0%		
TOURISM AND OTHER RELATED SOCIO-ECONOMIC STATISTICS			
Total Expenditure (US\$ millions) ^{VI}	\$43.1	GDP at Factor Cost (US\$ millions) ^{IX}	\$482.9
Consumer Price Index (% ch. 2010/'09)	5.4%	Hotel and Restaurant contribution to GDP ^V	25.3%
ACCOMMODATION STATISTICS		SOCIO-ECONOMIC STATISTICS	
Rooms ^{XIII}	1,758	Land Area (square Kilometres)	27,750
		Population (thousand mid year 2009*)	9,923.4

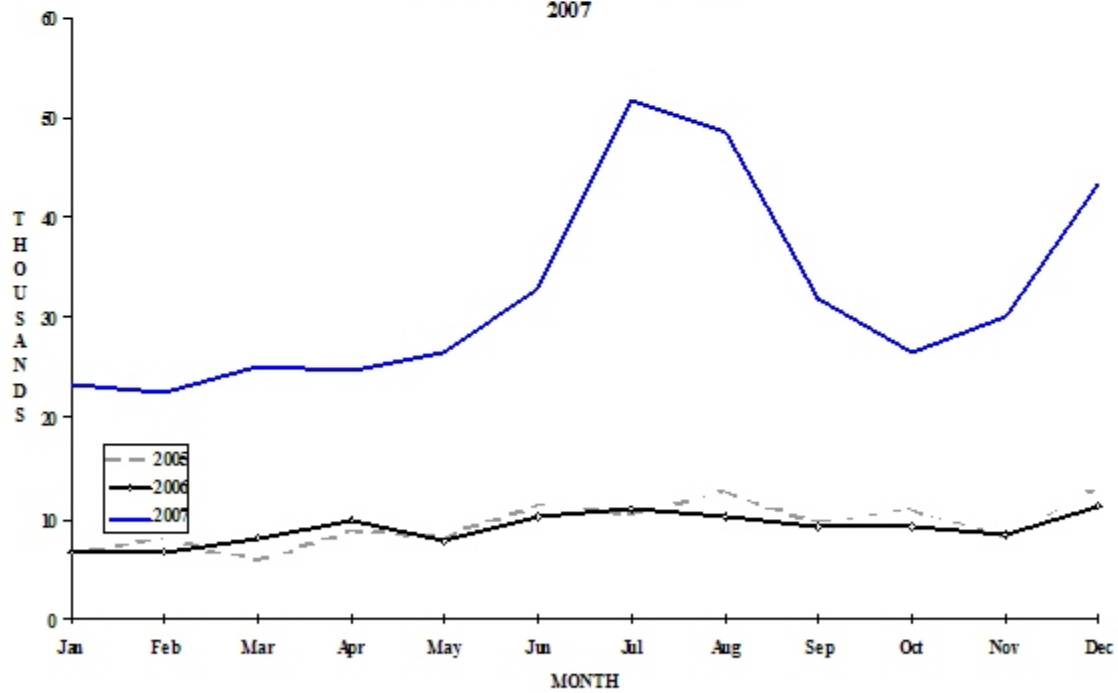
* - end of year population

HAITI

TOURIST ARRIVALS BY MAIN MARKETS
2007



MONTHLY TOURIST ARRIVALS
2007



HAITI

TOURIST ARRIVALS BY COUNTRY OF RESIDENCE

Country of Residence	2003	2004	2005	2006	% Share	
					2007 *	2007
United States	94515	72895	77047	79247	266793	69.1
Canada	11354	8014	9986	8733	30046	7.8
France	3754	1831	3349	2787	10246	2.7
Other Europe	3905	2415	3371	3995	13126	3.4
Dom. Republic	6586	3648	5543	2785	8819	2.3
Other Caribbean	8093	3866	7796	4909	15426	4.0
Latin America	4315	1955	2856	3224	10902	2.8
Rest of World	3509	1815	2319	2103	30702	8.0
TOTAL	136031	96439	112267	107783	386060	100.0

MONTHLY TOURIST ARRIVALS

Month	2003	2004	2005	2006	% change	
					2007 *	2007/06
January	10437	10545	6281	6631	23155	-
February	9875	6289	8028	6540	22654	-
March	10547	3263	5567	7992	25161	-
April	10784	4695	8753	9803	24639	-
May	9867	7894	8037	7659	26442	-
June	11289	9459	11322	10172	32821	-
July	15058	11257	10345	11003	51619	-
August	12389	9958	12576	10069	48318	-
September	10058	7891	9501	9045	31925	-
October	9575	7245	10843	9125	26348	-
November	8237	6854	8049	8431	29951	-
December	17915	11089	12965	11213	43027	-
TOTAL	136031	96439	112267	107683	386060	-

* New series, includes Haitians resident aboard.

HAITI

MONTHLY CRUISE PASSENGER ARRIVALS

Month	2003	2004	2005	2006	% change	
					2007	2007/06
January	23326	41230	30546	38119	51400	34.8
February	30245	18895	39016	30135	41313	37.1
March	36078	0	37247	36575	47538	30.0
April	32099	0	35469	37103	37252	0.4
May	34872	10454	29030	20461	35298	72.5
June	38171	28302	21482	40142	38065	-5.2
July	37405	28757	25323	38416	42807	11.4
August	35307	28694	28700	37968	37580	-1.0
September	39357	28091	22398	39954	30834	-22.8
October	37305	31250	33721	40354	34829	-13.7
November	34398	36332	25126	41477	43054	3.8
December	45130	30187	39963	49217	42107	-14.4
TOTAL	423693	282192	368021	449921	482077	7.1

TOURIST ARRIVALS BY PLACE OF STAY

PLACE OF STAY	1998	1999	2000	2001	2002
Hotels	n.a	n.a	n.a	n.a	n.a
Private Accommodation	n.a	n.a	n.a	n.a	n.a
Total	146837	143362	140492	141634	n.a

Source: *Secrétairerie D'état Au Tourisme, Haiti*