

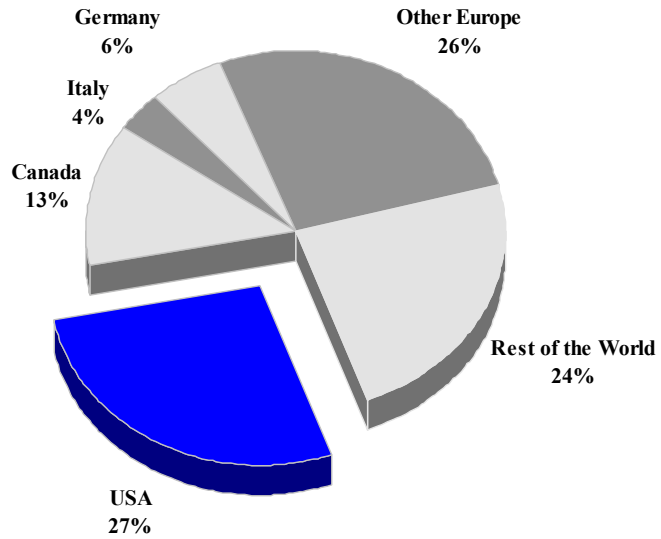
DOMINICAN REPUBLIC

TOURISM HIGHLIGHTS FOR 2006

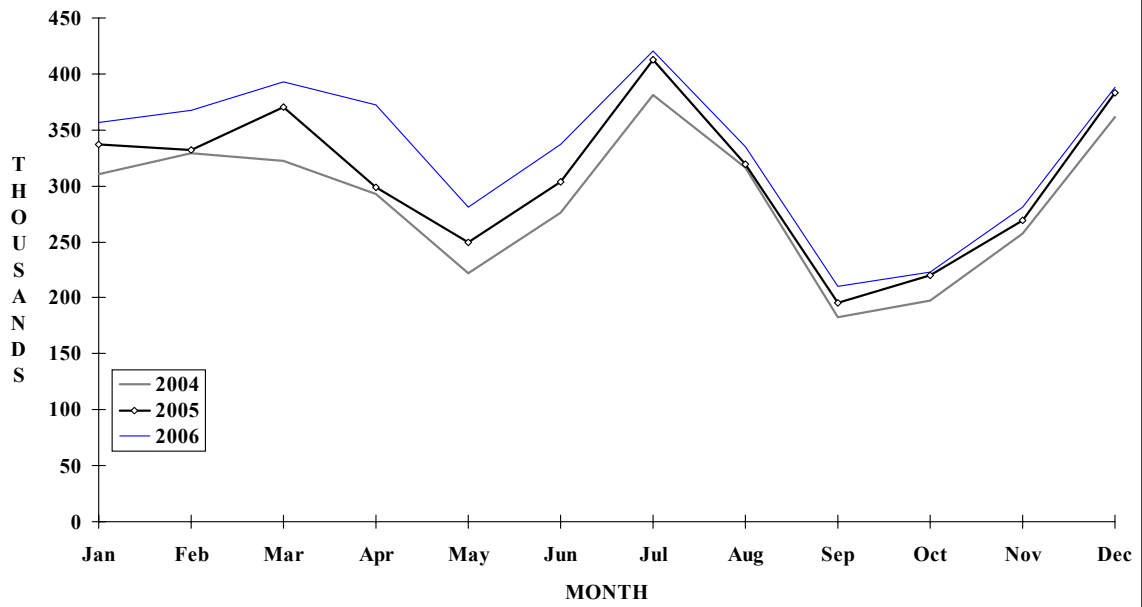
VISITOR ARRIVALS			
Tourist Air Arrivals ✈ ➡ <i>Summer</i> ➡ <i>Winter</i>	3,965,055 62.4% 37.6%	Cruise Passengers Cruise ship calls	303,489 n.a
VISITOR PROFILE			
Average Length of Stay (nights)	8.9	Tourist Arrivals by Purpose of Visit	
Tourist Arrivals by Place of Stay		➡ <i>Holiday</i>	96.8%
➡ <i>Hotels</i>	76.9%	➡ <i>Business</i>	2.0%
➡ <i>Other</i>	23.1%	➡ <i>Other</i>	1.2%
TOURISM AND OTHER RELATED ECONOMIC STATISTICS			
Visitor Expenditure (<i>US\$ millions</i>)	\$3,180.4	GDP at Factor Cost (<i>US\$ millions</i>)	\$16,846.5
Consumer Price Index (% ch. 2004/'03)	51.5%	Hotel and Restaurant contribution to GDP	7.3%
ACCOMMODATION STATISTICS		SOCIO-ECONOMIC STATISTICS	
Rooms	59,082	Land Area (<i>square Kilometres</i>)	48,442
Room Occupancy Rates	74.2%	Population (<i>thousand mid year 2004</i>)	9,084.0

DOMINICAN REPUBLIC

**TOURIST ARRIVALS BY MAIN MARKETS
2006**



MONTHLY TOURIST ARRIVALS



DOMINICAN REPUBLIC

TOURIST AIR ARRIVALS BY NATIONALITY

Nationality	2002	2003	2004	2005	2006
Non-Nationals	2295630	2747899	2872680	3088247	3342106
Dominicans*	497579	520283	577500	602445	622949
TOTAL	2793209	3268182	3450180	3690692	3965055

*Dominican nationals resident overseas.

VISITOR ARRIVALS* BY MODE OF ARRIVAL

Mode of Arrival	2002	2003	2004	2005	2006
Air	2793209	3268182	3450180	360692	3965055
Sea*	n.a	n.a	n.a	n.a	n.a
TOTAL	2793209	3268182	3450180	360692	3965055

*Includes Cruise passenger arrivals

FOREIGN VISITOR AIR ARRIVALS BY NATIONALITY

Country of Residence	2002	2003	2004	2005	2006	%Share 2006
U.S.A	710875	865942	933017	1010012	1092317	27.5
Canada	313491	412625	448926	427074	509323	12.8
Italy	113569	135293	124004	133954	144115	3.6
Germany	240546	243135	233146	234800	226737	5.7
United Kingdom	146257	171696	198014	217945	242559	6.1
Other Europe	545948	715854	732620	808710	812511	20.5
Other	707117	248664	780453	858197	937493	23.6
TOTAL	2777803	2793209	3450180	3690692	3965055	100.0

FOREIGN VISITOR AIR ARRIVALS

Month	2002	2003	2004	2005	2006	% Change 2006/05
January	216795	286589	310003	336746	356247	5.8
February	244024	293289	329014	331651	367698	10.9
March	285110	299597	321984	369991	393014	6.2
April	215449	270960	293048	298746	371953	24.5
May	185663	211592	221596	249561	280738	12.5
June	224456	256771	276484	303950	336738	10.8
July	287364	351923	381284	412849	420265	1.8
August	245825	312545	316866	319705	335081	4.8
September	170267	191877	183234	195593	210695	7.7
October	171778	201939	197614	219649	223449	1.7
November	223904	247155	257068	268759	281308	4.7
December	322574	343945	361985	383492	387869	1.1
TOTAL	2793209	3268182	3450180	3690692	3965055	7.4

* Including Dominican nationals resident overseas.

MONTHLY CRUISE ARRIVALS

Month	2002	2003	2004	2005	2006	% Change 2006/05
January	35944	48374	75635	47227	47014	-0.5
February	35579	46955	74547	54706	54168	-1.0
March	38025	57717	77393	55186	56989	3.3
April	26658	53638	57380	32456	29186	-10.1
May	5765	12039	12697	6370	10650	67.2
June	10433	14459	13543	7634	7183	-5.9
July	12703	23303	18743	11762	14961	27.2
August	6643	12322	13057	5365	8226	53.3
September	3163	7503	5127	4502	3613	-19.7
October	7076	19523	13415	2255	4241	88.1
November	19922	36187	34856	17113	20065	17.3
December	44781	65973	59928	45229	47193	4.3
TOTAL	283414	182220	456321	289805	303489	4.7

TOURIST ACCOMMODATION (Rooms)

Rooms	2002	2003	2004	2005	2006
Hotels	n.a	n.a	n.a	56555	n.a
Apartments	n.a	n.a	n.a	376	n.a
Villas/Cottages	n.a	n.a	n.a	610	n.a
Other	n.a	n.a	n.a	2329	n.a
TOTAL	54730	56378	59082	59870	

* Preliminary

**Source: Banco Central de la Republica Dominicana

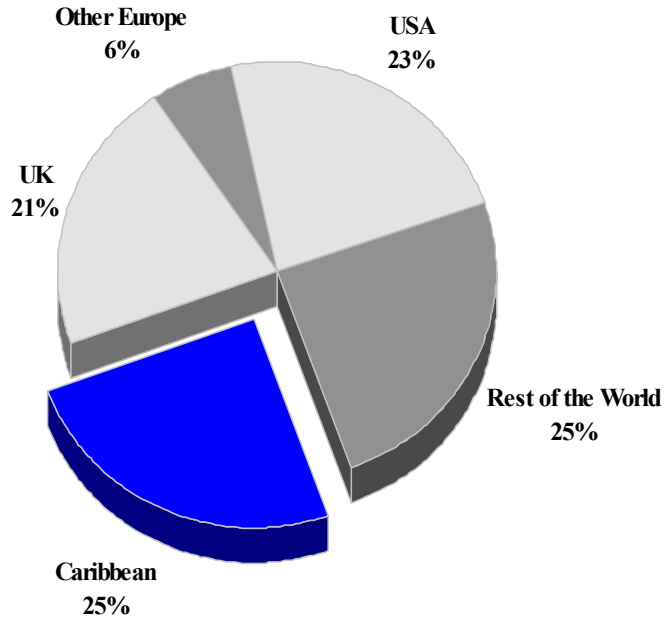
GRENADA

TOURISM HIGHLIGHTS FOR 2006

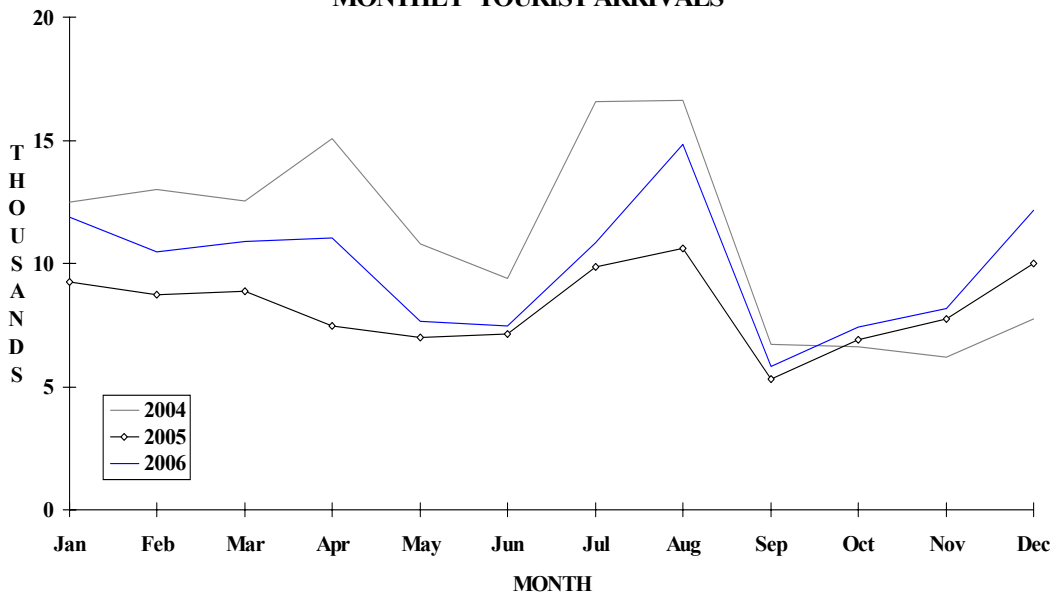
VISITOR ARRIVALS			
Tourist Arrivals ➔ ➔ <i>Summer</i> ➔ <i>Winter</i>	118,654 62.7% 37.3%	Cruise Passengers ➔ <i>Summer</i> ➔ <i>Winter</i> Cruise Ship calls Yachts calls ¹	218,684 36.3% 63.7% 221 2,989
VISITOR PROFILE			
Average Length of Stay (nights) Tourist Arrivals by Purpose of Visit¹ ➔ Holiday ➔ Business ➔ Other	7.3 75.8% 15.7% 8.5%	Tourist Arrivals by Place of Stay¹ ➔ Hotels ➔ Guest Houses/Apartments ➔ Private ➔ Other	36.2% 11.2% 39.6% 12.9%
TOURISM AND OTHER RELATED ECONOMIC STATISTICS			
Total Expenditure (US\$ millions) ¹¹ Tourism Budget (US\$ thousands) ^{11b}	\$156.8 \$4,182	Hotel and Restaurant contribution to GDP ¹ GDP at Factor Cost (US\$ millions) ¹ Consumer Price Index (% ch. 2004/'03)	7.9% \$355.6 2.3%
ACCOMMODATION STATISTICS		SOCIO-ECONOMIC STATISTICS	
Rooms Room Occupancy Rates ¹¹	1,470 71.0%	Land Area (square Kilometres) Population (thousand mid year 2004)	344 104.5

GRENADA

TOURIST ARRIVALS BY MAIN MARKETS 2006



MONTHLY TOURIST ARRIVALS



GRENADA

TOURIST ARRIVALS BY COUNTRY OF RESIDENCE

Country of Residence	2002	2003	2004	2005	2006	% Share 2006
United States	36508	35191	30127	25181	27127	22.9
Canada	4684	5599	5309	4341	6335	5.3
United Kingdom	29760	33286	28232	15605	25042	21.1
Other Europe	9208	9857	7945	6779	7492	6.3
Trinidad & Tobago	17219	19958	20228	13055	15522	13.1
Other CARICOM	15084	16234	17638	13731	14007	11.8
Grenadians abroad	14836	16715	19076	15907	18400	15.5
Rest of the World	5117	5515	5310	3949	4729	4.0
TOTAL	132416	142355	133865	98548	118654	100.0

MONTHLY TOURIST ARRIVALS

Month	2002	2003	2004	2005	2006	% Change 2006/05
January	12265	12378	12486	9260	11888	28.4
February	10934	11601	13012	8173	10490	28.3
March	13392	11895	12546	8852	10903	23.2
April	9846	12822	15090	7481	11013	47.2
May	9397	8240	10821	7013	7656	9.2
June	8237	10089	9380	7115	7468	5.0
July	12867	15246	16580	9839	10868	10.5
August	16951	17381	16629	10614	14816	39.6
September	6755	7862	6724	5299	5835	10.1
October	8804	10264	6634	6886	7415	7.7
November	10117	10778	6220	7780	8154	4.8
December	12851	13799	7743	10237	12148	18.7
TOTAL	132416	142355	133865	98549	118654	20.4

CRUISE PASSENGER ARRIVALS

Month						% Change	
	2002	2003	2004	2005	2006	2006/05	
January	24390	24384	46681	50681	46238	-8.8	
February	24452	22159	36101	45146	35342	-21.7	
March	22002	21949	38877	52214	32911	-37.0	
April	20012	18403	22915	36677	24764	-32.5	
May	684	3499	7408	300	849	183.0	
June	717	515	5605	297	119	-59.9	
July	713	487	5934	190	64	-66.3	
August	716	360	5849	37	0	-100.0	
September	414	137	2856	84	0	-100.0	
October	5386	3170	401	5095	7372	44.7	
November	15306	16596	19719	30779	23769	-22.8	
December	20269	35266	37454	53580	47256	-11.8	
TOTAL	135061	146925	229800	275080	218684	-20.5	

Number of Calls

Cruise Ships	259	267	249	260	221
Yachts	3966	4157	3177	2989	

TOURIST ACCOMMODATION (Rooms)

Type of Accommodation	2002	2003	2004	2005	2006
Hotels	1227	1167	466	878	
Guest Houses	227	225	172	241	
Apartments/Cottages	323	366	222	351	
TOTAL	1777	1758	860	1470	0

Source: Grenada Department of Tourism

GUADELOUPE

(including Les Saintes, Desirade, Marie Galante, St Barthelemy and St Martin)

Visitor Arrival Summary

Data was unavailable for Guadeloupe in 2004.

TOURISM HIGHLIGHTS FOR 2006

VISITOR ARRIVALS			
*Tourist Arrivals ^{III} ➔ ➔ Summer ¹ ➔ Winter ¹	623,134 40% 60%	Cruise Passengers ➔ Summer ➔ Winter Cruise calls	195,102 62.6% 37.4% 284
VISITOR PROFILE			
Average Length of Stay (nights) Tourist Arrivals by Purpose of Visit ^{VI} ➔ Holiday ➔ Business ➔ Other	3.5 88% 12% n.a.	Tourist Arrivals by Place of Stay ^{VI} ➔ Hotels ➔ Guest House/Apartments ➔ Private ➔ Other	70% 24% n.a. 6%
TOURISM AND OTHER ECONOMIC STATISTICS			
Total Expenditure (US\$ millions) ^{VI}	\$314.5	Tourism Budget (US\$ thousands) ^b Consumer Price Index (% ch. 2003/'02)	\$8,137 1.6%
ACCOMMODATION STATISTICS		SOCIO-ECONOMIC STATISTICS	
Rooms ^I Room Occupancy Rates ^I	7,603 44.9%	Land Area ** (square Kilometres) Population (thousand mid year 2003)	1,373 438.8

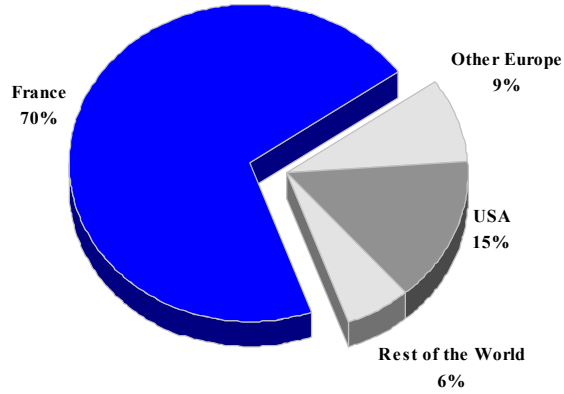
* Estimated by Office Départemental du Tourisme, Guadeloupe

** Including dependencies

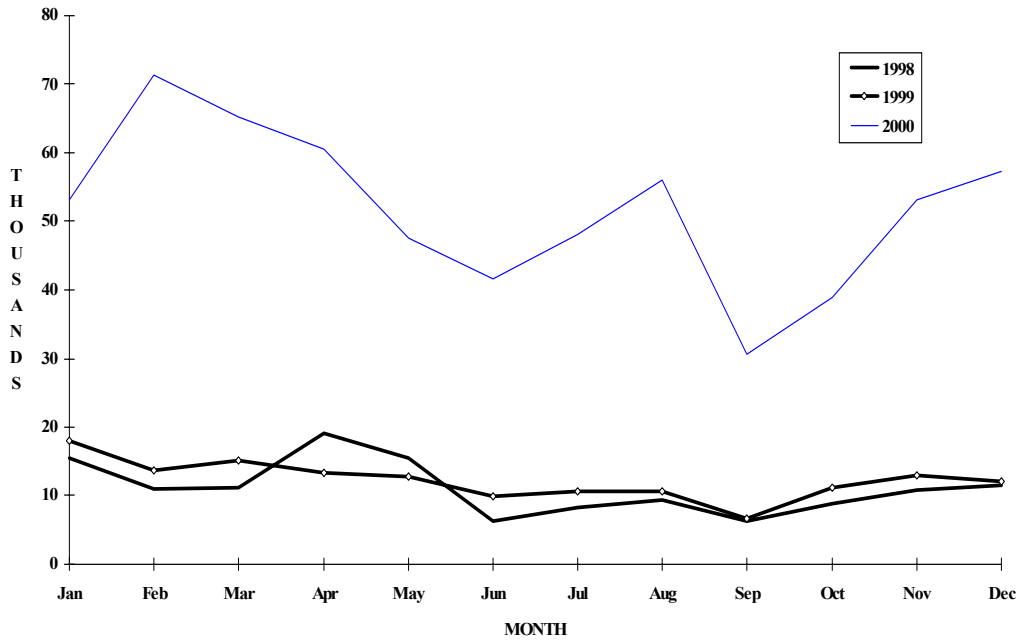
¹ Distribution based on data on hotel registrations

GUADELOUPE

TOURIST ARRIVALS BY MAIN MARKETS 2000



MONTHLY TOURIST ARRIVALS



•The sample in 2000 was different from that of 1999

GUADELOUPE

ESTIMATED TOURIST ARRIVALS

	1999	2000	2001	2002	2003
Guadeloupe	561000	602875	520000	n.a	n.a
Lles Du Nord	n.a	204165	n.a	n.a	n.a
TOTAL	711000	807040	773400	° 765700	° 799400

TOURIST ARRIVALS AT HOTELS *

Country of Residence	1999	2000	2001	2002	% Share	
					2003	2003
United States	5073	92474	n.a	n.a	n.a	n.a
Canada	2254	10431	n.a	n.a	n.a	n.a
France	124330	440779	n.a	n.a	n.a	n.a
Other Europe	12700	54606	n.a	n.a	n.a	n.a
Americas/Caribbean	1108	22966	n.a	n.a	n.a	n.a
Rest of World	736	1878	n.a	n.a	n.a	n.a
TOTAL	146201	623134	n.a	n.a	n.a	n.a

MONTHLY TOURIST ARRIVALS AT HOTELS

Month	1999	*2000	2001	2002	% Change	
					2003	2003/02
January	17885	53164	n.a	n.a	n.a	n.a
February	13655	71475	n.a	n.a	n.a	n.a
March	15011	65153	n.a	n.a	n.a	n.a
April	13342	60494	n.a	n.a	n.a	n.a
May	12727	47545	n.a	n.a	n.a	n.a
June	9853	41595	n.a	n.a	n.a	n.a
July	10554	48006	n.a	n.a	n.a	n.a
August	10554	55913	n.a	n.a	n.a	n.a
September	6593	30654	n.a	n.a	n.a	n.a
October	11092	38848	n.a	n.a	n.a	n.a
November	12994	53082	n.a	n.a	n.a	n.a
December	11941	57205	n.a	n.a	n.a	n.a
TOTAL	146201	623134	n.a	n.a	n.a	n.a

* The reader is cautioned when using the monthly percentage change since the number of reporting hotels may vary from year to year. This is particularly true for 2000, where the sample changed.

GUADELOUPE

CRUISE PASSENGER ARRIVALS

Month	1999	2000	2001	2002	% Change	
					2003	2003/02
January	34314	60532	n.a	40053	32643	-18.5
February	38836	60723	n.a	42653	30881	-27.6
March	36612	76010	n.a	51507	33812	-34.4
April	33156	40464	n.a	25981	24790	-4.6
May	18950	9609	n.a	0	0	-
June	19790	10297	n.a	0	4255	-
July	18914	10142	n.a	5394	6164	14.3
August	13118	10175	n.a	0	6193	-
September	4646	9512	n.a	0	4054	-
October	23690	15881	n.a	0	5305	-
November	23528	36916	n.a	11137	10414	-6.5
December	27180	52057	n.a	28103	36591	30.2
TOTAL	292734	392318	361715	204828	195102	-4.7
Number of Calls	203	249	249	240	284	

TOURIST ACCOMMODATION (Hotel Rooms Only)

Area	1999	2000	2001	2002	2003
Guadeloupe*	4459	4504	n.a	n.a	4159
Les Saintes	80	85	n.a	n.a	83
Saint Barthelemy	571	576	n.a	n.a	567
Saint Martin	2979	2801	n.a	n.a	2623
Marie Galante & Desirade	171	170	n.a	n.a	171
TOTAL	8260	8136	8019	n.a	7603

* Grand Terre and Basse Terre

Source: Office Departemental du Tourisme de la Guadeloupe

GUYANA

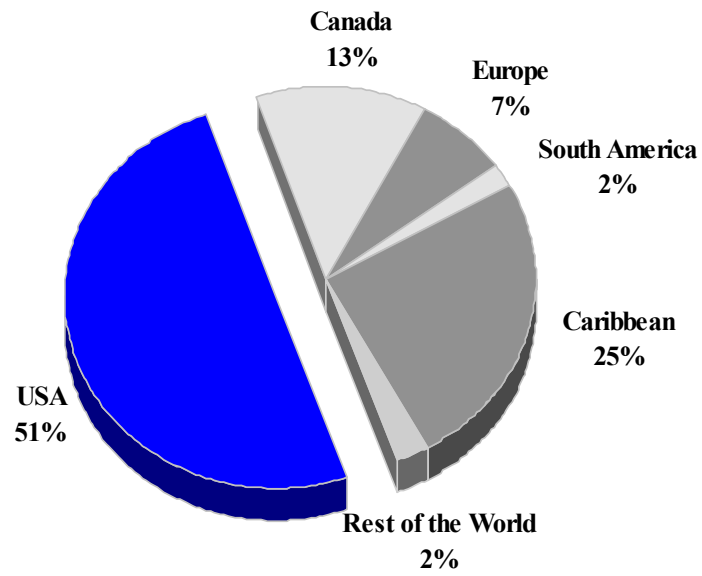
TOURISM HIGHLIGHTS FOR 2006

VISITOR ARRIVALS			
Tourist Arrivals ✈	113,474	Arrivals by Sea	<u>NOT</u>
➔ <i>Summer</i>	65.6%		<u>AVAIL</u>
➔ <i>Winter</i>	34.4%		<u>ABLE</u>
VISITOR PROFILE			
Average Length of Stay (<i>nights</i>) ^{III}	19.2	Tourist Arrivals by Place of Stay	
Tourist Arrivals by Purpose of Visit		➔ <i>Hotels</i>	13.7%
➔ <i>Holiday</i>	64.3%	➔ <i>Guest House/Apartments</i>	0.7%
➔ <i>Business</i>	10.9%	➔ <i>Private</i>	85.2%
➔ <i>Other</i>	24.8%	➔ <i>Other</i>	0.3%
TOURISM AND OTHER RELATED ECONOMIC STATISTICS			
Total Expenditure (<i>US\$ millions</i>) ^e	\$86.6	GDP at Factor Cost (<i>US\$ millions</i>)	\$653.3
Tourism Budget (<i>US\$ thousand</i>) ^{IX}	\$700	Consumer Price Index (<i>% ch. 2004/'03</i>)	5.5%
ACCOMMODATION STATISTICS		SOCIO-ECONOMIC STATISTICS	
Rooms ^{VI}	730	Land Area (<i>square Kilometres</i>)	215,000
		Population (<i>thousand mid year 2003</i>)	746.0

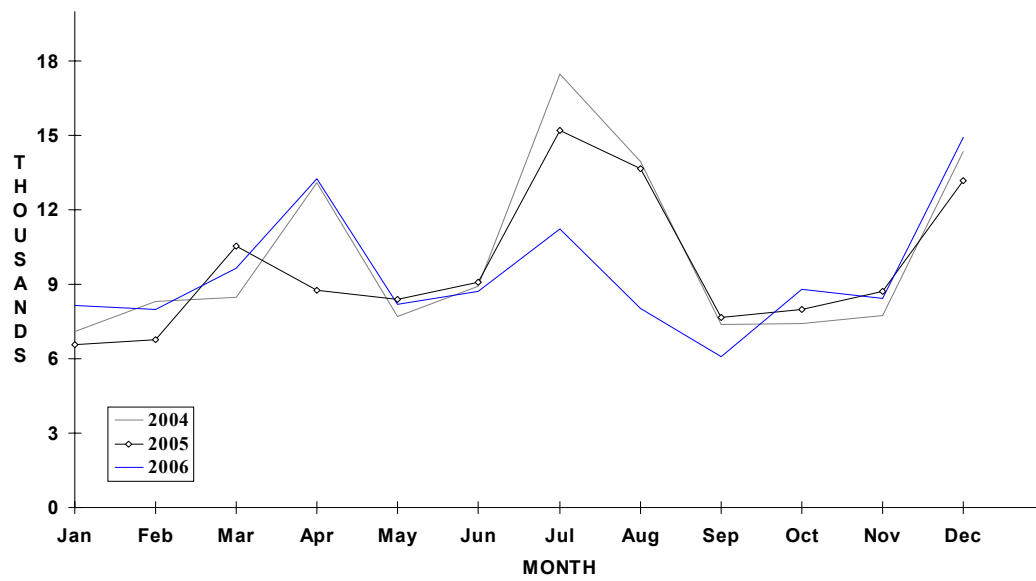
GUYANA

TOURIST ARRIVALS BY MAIN MARKETS

2006



MONTHLY TOURIST ARRIVALS



TOURIST ARRIVALS BY COUNTRY OF ORIGIN

Country of Origin	2002	2003	2004	2005	%Share	
					2006	2006
United States	50058	49625	64948	60071	57193	50.4
Canada	14190	14144	15900	15876	14580	12.8
Europe	8190	8136	9056	8704	8390	7.4
Caribbean	28211	24779	28091	26810	28437	25.1
South America	1983	2186	1879	2376	2087	1.8
Other	1709	2041	2115	2759	2787	2.5
TOTAL	104341	100911	121989	116596	113474	100.0

** 1998 figures are from January - November only

MONTHLY TOURIST ARRIVALS

Month	2002	2003	2004	2005	% Change	
					2006	2006/05
January	6249	6206	7094	6553	8156	24.5
February	7382	6230	8307	6755	7977	18.1
March	12042	6969	8459	10560	9664	-8.5
April	9120	9542	13117	8779	13250	50.9
May	6773	6207	7694	8381	8212	-2.0
June	8073	7358	8919	9087	8716	-4.1
July	13912	10829	17501	15221	11218	-26.3
August	12714	11241	13936	13666	8033	-41.2
September	6167	7230	7398	7675	6069	-20.9
October	5446	7560	7434	8006	8789	9.8
November	5388	7877	7768	8737	8443	-3.4
December	11075	13662	14362	13176	14947	13.4
TOTAL	104341	100911	121989	116596	113474	-2.7

VISITOR ARRIVALS BY MODE OF ENTRY AND BY SEX

Mode of Entry	1996	1997	1998	1999	2000
Air	80817	67833	n.a	n.a	n.a
Overland	453	405	n.a	n.a	n.a
Sea	10654	7498	n.a	n.a	n.a
Not Stated	-	1	n.a	n.a	n.a
TOTAL	91924	75737	n.a	n.a	n.a

Sex	1996	1997	1998	1999	2000
Male	52114	42857	n.a	n.a	n.a
Female	39633	32879	n.a	n.a	n.a
Not Stated	177	1	n.a	n.a	n.a

TOURIST ACCOMMODATION* (Rooms)

Area	2002	2003	2004	2005	2006
Georgetown	n.a	n.a	n.a	n.a	n.a
Rest of Country	n.a	n.a	n.a	n.a	n.a
Total	n.a	n.a	n.a		

TOURIST ACCOMMODATION (Rooms)

Type of Accommodation	2002	2003	2004	2005	2006
Hotel/Guest House	n.a	n.a	n.a	n.a	n.a
Resort Lodge	n.a	n.a	n.a	n.a	n.a
TOTAL	n.a	n.a	n.a	n.a	n.a

*Tourist hotels only

Sources: Ministry of Trade and Tourism; Statistical Bureau - Guyana

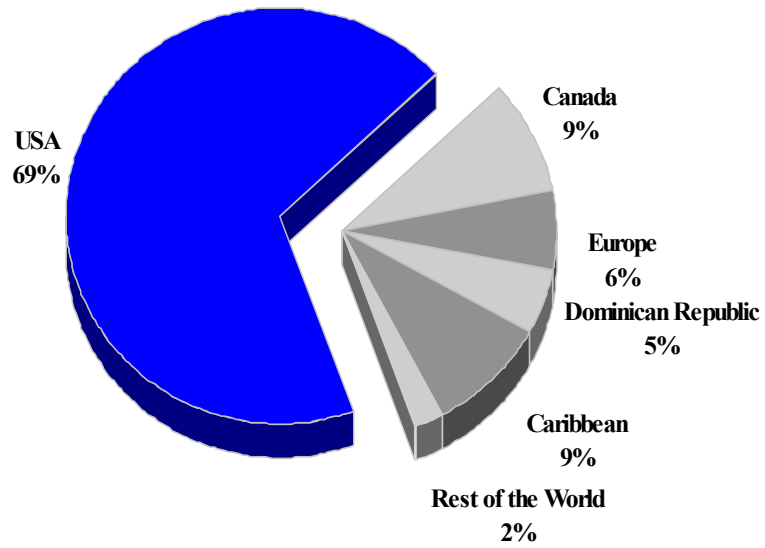
HAITI

TOURISM HIGHLIGHTS FOR 2004

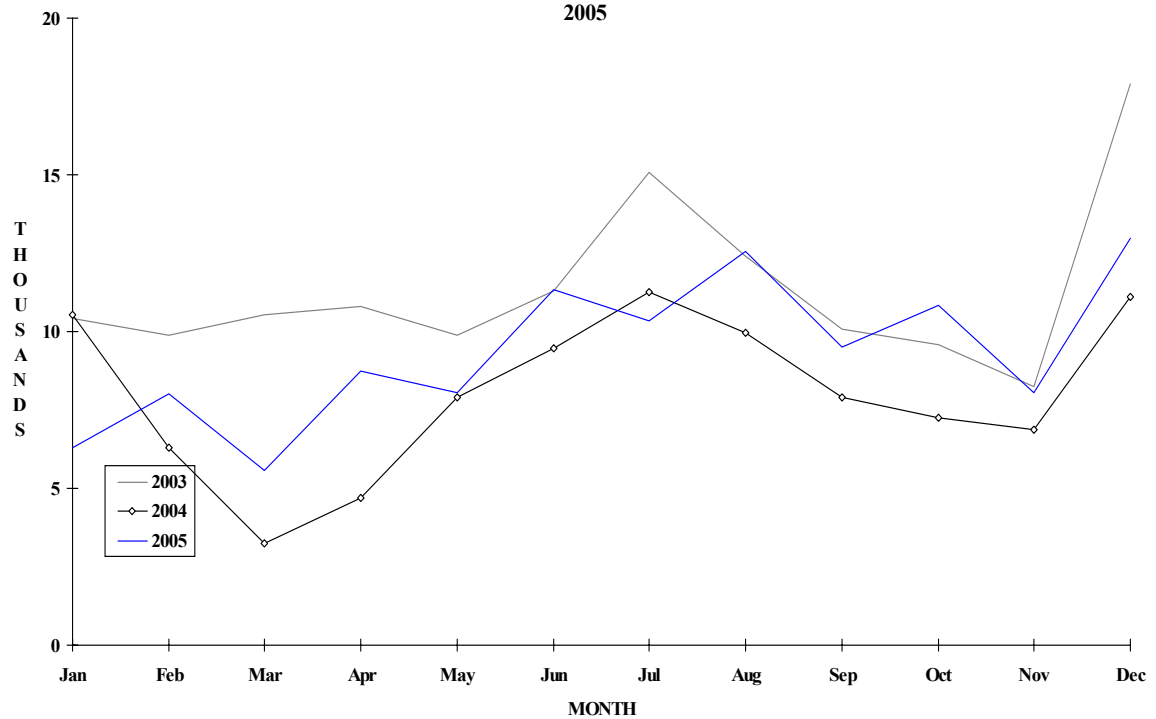
VISITOR ARRIVALS			
Tourist Arrivals ^{III} ➔	108,868	Cruise Passengers ^{IV}	357,442
➔ <i>Summer</i>	69.5%	➔ <i>Summer</i>	67.5%
➔ <i>Winter</i>	30.5%	➔ <i>Winter</i>	32.5%
VISITOR PROFILE			
Tourist Arrivals by Purpose of Visit ^V		Tourist Arrivals by Place of Stay ^{VI}	
➔ <i>Holiday</i>	31.0%	➔ <i>Hotels</i>	37.1%
➔ <i>Business</i>	18.0%	➔ <i>Private/Unregistered</i>	62.9%
➔ <i>Other</i>	51.0%		
TOURISM AND OTHER RELATED SOCIO-ECONOMIC STATISTICS			
Total Expenditure (US\$ millions) ^{III}	\$54	GDP at Factor Cost (US\$ millions) ^{III}	\$482.9
Consumer Price Index (% ch. 2002/'01)	9.9%	Hotel and Restaurant contribution to GDP ^{II}	25.3%
ACCOMMODATION STATISTICS		SOCIO-ECONOMIC STATISTICS	
Rooms ^{IX}	1,758	Land Area (square Kilometres)	27,750
		Population (thousand mid year 2001)	8,131.5

HAITI

**TOURIST ARRIVALS BY MAIN MARKETS
2005**



**MONTHLY TOURIST ARRIVALS
2005**



TOURIST ARRIVALS BY COUNTRY OF RESIDENCE

Country of Residence	1998	1999	2000	2001	% Share	
					2002	2002
United States	93978	92543	92921	n.a	n.a	n.a
Canada	15489	15955	14752	n.a	n.a	n.a
France	6984	6318	6420	n.a	n.a	n.a
Other Europe	6623	5465	4540	n.a	n.a	n.a
Dom. Republic	7905	6769	7034	n.a	n.a	n.a
Other Caribbean	9020	9872	9017	n.a	n.a	n.a
Latin America	4993	4054	4023	n.a	n.a	n.a
Rest of World	1845	2386	1785	n.a	n.a	n.a
TOTAL	146837	143362	140492	141634	n.a	n.a

MONTHLY TOURIST ARRIVALS

Month	1998	1999	2000	2001	% change	
					2002	2002/01
January	13607	12199	10242	10564	10102	-4.4
February	12468	13541	9829	10040	9473	-5.6
March	9976	10622	11148	10834	9985	-7.8
April	10527	9695	11683	11759	12325	4.8
May	10036	9736	10163	9708	9589	-1.2
June	10103	10401	11235	12032	12921	7.4
July	17557	14196	17991	16766	15986	-4.7
August	12761	16312	15750	16259	17958	10.5
September	8987	10133	11536	10970	10529	-4.0
October	9495	9968	8986	8814	n.a	-
November	11385	10436	8530	9059	n.a	-
December	19935	16123	13399	14829	n.a	-
TOTAL *	146837	143362	140492	141634	n.a	-

MONTHLY CRUISE PASSENGER ARRIVALS

Month	1998	1999	2000	2001	% change	
					2002	2002/01
January	22613	20920	25088	30722	31019	1.0
February	20550	19471	24827	26949	27278	1.2
March	27822	20474	22706	27510	30167	9.7
April	16822	21127	22259	31004	31986	3.2
May	19054	21521	31282	34713	20354	-41.4
June	24520	22334	19773	28597	27984	-2.1
July	16946	19774	25900	32990	32626	-1.1
August	21960	26739	26956	32696	32459	-0.7
September	13834	15658	21858	24028	31734	32.1
October	16265	18302	27679	26762	n.a	-
November	20726	19453	28565	30974	n.a	-
December	25109	17552	27623	30497	n.a	-
TOTAL	246221	243325	304516	357442	n.a	n.a

TOURIST ARRIVALS BY PLACE OF STAY

PLACE OF STAY	1998	1999	2000	2001	2002
Hotels	n.a	n.a	n.a	n.a	n.a
Private Accommodation	n.a	n.a	n.a	n.a	n.a
Total	146837	143362	140492	141634	n.a

Source: *Secrétairerie D'état Au Tourisme, Haiti*